

2022

# ALPHA GALA



*Always Bet on Alpha!*





# THE WILSON GROUP

KW23

THE ONLY LOCAL INDEPENDENTLY OWNED PROVIDER OF OFFICE  
TECHNOLOGY IN SOUTHWESTERN PENNSYLVANIA



\*Copier/Printer/Scanner/Fax \* Document Storage/Retrieval/Destruction \*

\*Interactive Display Boards (Sharp Aquos Boards) \* IT Managed Services \*

\*Paper & Ink/Toner Supplies \*Postage Machines/Mailing Solutions/Folder Inserters \*

\*Managed Print Services \* Wide Format & Plotters \*

[www.thewilsongroup.com](http://www.thewilsongroup.com)

© 2011 Nathan W. Fullerton. All rights reserved.

# 2022 ALPHA GALA

Pines Barn,  
Irwin, PA  
May 7, 2022

## Mistress of Ceremonies

Ki Ki Brown

CEO Nice 2 Media & WAMO Radio Personality

3:00 p.m.	Gala Start / hors d'oeuvres
3:15 p.m.	Opening Remarks & Betting Rules
5:00 p.m.	Dinner
5:30 p.m.	Winner of Best Hat and Bowtie
5:45 p.m.	Live Auction Item Bidding
6:00 p.m.	Silent Auction Closed
6:00 p.m.	Alpha Specials Closed
6:00 p.m.	Live Race Broadcast and Bidding
7:15 p.m.	Closing Remarks



**All-inclusive dog  
care that's worth  
*barking* about!**

### LOCATIONS IN:

East End • Monroeville • Sewickley • South Hills • Strip District  
Upper St. Clair • Wexford • Carnegie (coming soon)

[www.TheDogStop.com](http://www.TheDogStop.com)



GROOMING



DAYCARE



BOARDING



TRAINING



RETAIL



# SALEM'S

## MARKET AND GRILL

IS PROUD TO SUPPORT  
PROVIDENCE HEIGHTS  
ALPHA SCHOOL







# MENU

## *Appetizers*

Deviled Eggs

Hush Puppies

Shrimp Cocktail

Corn Chowder

Bourbon Meatballs

## *Dinner*

Mac N' Cheese

Scalloped Potatoes

Yellow Rice

Green Beans with Turkey Ham

Fried Chicken

Filet Kabob

Chicken Kabob

Mixed Green Salad

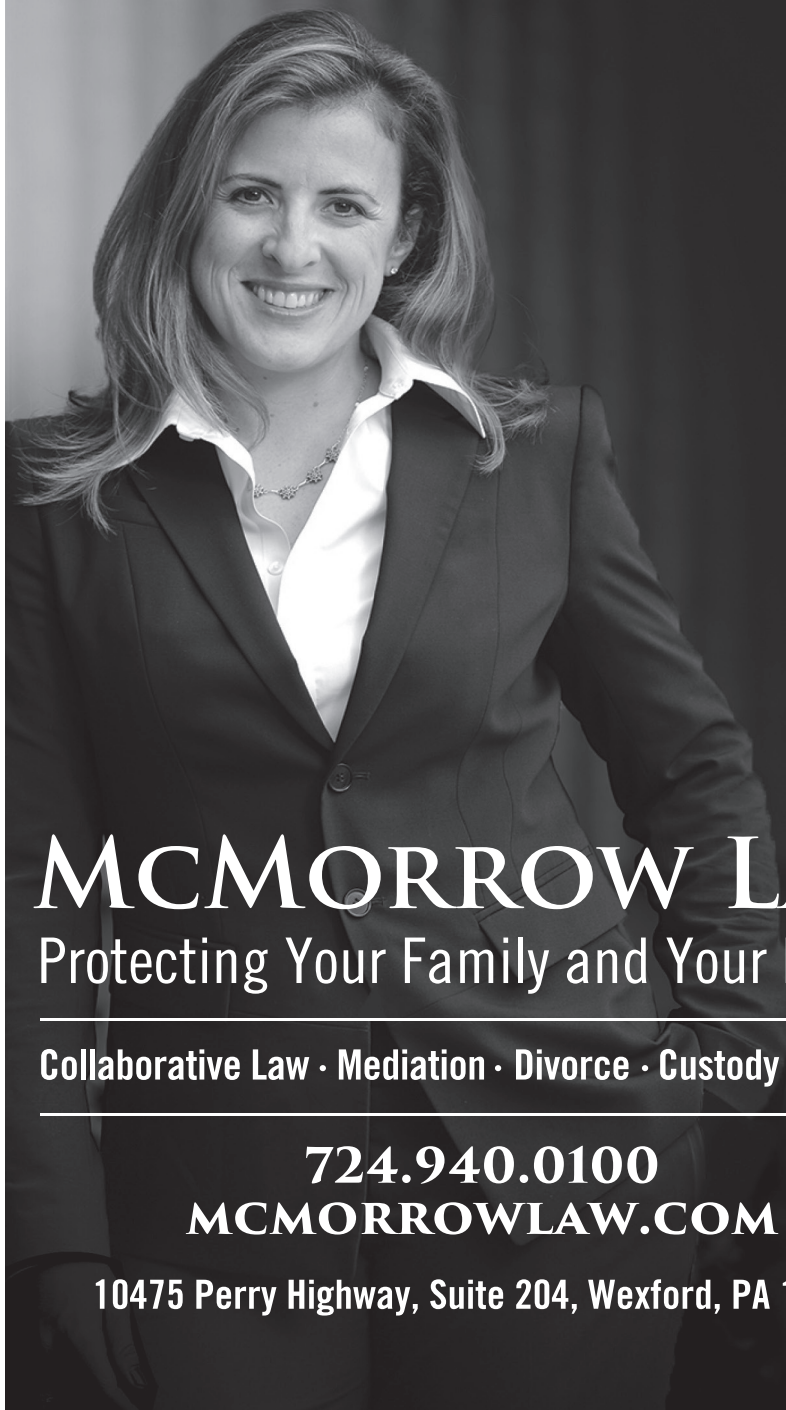
Corn Bread

Biscuits

***Dinner Provided By:***



Salem's Market and Grill



# MCMORROW LAW

Protecting Your Family and Your Future

---

Collaborative Law · Mediation · Divorce · Custody · Support

---

**724.940.0100**

**MCMORROWLAW.COM**

**10475 Perry Highway, Suite 204, Wexford, PA 15090**



# 2022 GALA COMMITTEE

Dear families, faculty, friends and supporters,

On behalf of the Providence Heights Alpha School gala committee, welcome to Always Bet on Alpha!

I am filled with so many positive emotions as we get together in person to celebrate our school. Amid the pandemic, most of us thought it would be years before we would be able to congregate as a large group once again.

This year we decided to try a few new things and we hope you are as excited about them as we are.

As this year's gala chair, I recognize the importance of this event and the financial support it provides for our school. Alpha boasts the highest quality education, as well as the most dedicated faculty and staff, for an incredibly reasonable tuition. Unfortunately, the tuition alone is not enough to cover our schools' financial needs. Like most of our neighboring Catholic Schools, we do not have the support of a diocesan parish. The funds we raise this evening will have a tremendous impact on the school's overall operating budget and mission "to develop servant leaders and innovative thinkers by providing a distinguished Catholic education. "

Thank you to the business community for supporting our gala through sponsorship, advertisements and your attendance this evening. Without your financial and in-kind commitment, tonight would not be possible. I am also forever indebted to the amazing gala committee members, homeroom parents and numerous other volunteers, who have volunteered countless hours and contributed their talents into making this evening a success.

I would also like to thank the Sisters of Divine Providence without whom the Alpha School would not be possible. Last, but certainly not least, I would also like to extend my heartfelt gratitude to our Principal, Ms. Ruefle, and the faculty and staff, who continue to bring out the best in our children.

The success of this gala is the product of amazing collaboration. Our team functioned as a collective unit, which was greater than the sum of its parts. For that I am speechless!

Please enjoy this evening's events.

Ashley Holtzman  
2022 Alpha Gala Chair

## GALA COMMITTEE

- Brittney Cira
- Amanda Kirkman
- Abby Martello
- Carissa Traill
- Julie Makuta
- Cristina Bahm
- Christina Ervin
- Anita King
- Leigh Frederick
- Tasha Wheeler
- Chrissy Liberati
- Janice Moore

## ALPHA PARENT TEACHER ASSOCIATION BOARD

Cristina Robles Bahm  
*President*

Brittney Cira  
*Vice President*

Judith Krysa  
*Treasurer*

Krista Stokes  
*Secretary*



We are proud  
to sponsor  
Providence  
Heights  
Alpha School



*Making God's Providence Visible*

9000 Babcock Boulevard  
Allison Park, PA 15101  
cdpsisters.org | 412.931.5242



# FROM THE PRINCIPAL

Dear Alpha School Family and Friends,

Welcome to our annual Gala and thank you very much for coming. It is great to be here, celebrating our school in person with the opportunity to connect with old friends and to meet new ones!

Events like this require the dedication and planning of so many people, but I particularly want to extend a special thank you to our gala chairperson, Mrs. Ashley Holtzman, all the members on the gala committee, our generous sponsors and donors, and everyone who are in attendance today for this special event. Thank you for all of your efforts, hard work, and generosity.

As our school's biggest fundraiser, the proceeds from this afternoon's Gala will support our operating budget and continue to preserve our school's tradition of academic excellence.

It is your tremendous generosity, enthusiasm, and commitment to our school that allows us to continue to fulfill our mission of providing a "distinguished Catholic education" and "developing servant leaders and innovative thinkers."

I sincerely hope you enjoy the afternoon and thank you all very much for coming, giving generously to our school, and "always betting on Alpha!"

With heartfelt appreciation and gratitude,

Peggy Ruefle, M.Ed., M.S.  
Principal

## PROVIDENCE HEIGHTS ALPHA SCHOOL BOARD OF DIRECTORS

- Dr. Regina Boerio
- Mr. Robert Cray
- Mr. John Dickinson
- Dr. Ginney Duffey
- Sr. Donna Marie Gribshaw, CDP
- Dr. Joseph C. Kush
- Sr. Marilyn McMillin, CDP
- Ms. Megan Gallagher
- Ms. Margaret Ruefle (Principal), ex-officer, non-voting
- Ms. Sue Seiff
- Mr. Jarret "Jay" Sperling
- Mr. Dana Stewart - President

## FACULTY & STAFF

- Douglas Beacham
- Adam Beck
- Leslie Beck
- Jill Bower
- Jennifer Brown-Clair
- Kacey Cerminaro
- Linda Cessar
- Lisa DeArmit
- Erin DeVore
- Colin Dugan
- Christina Ervin
- Stephanie Forbes
- Tricia Katyal
- Anita King
- Jimmy Little
- Dean Mosesso
- Lisa Olivo
- Heather Parker
- Khristee Popowsk
- Alivia Sanvito
- Sue Shick
- Riley Trueman
- Marcy Valentas
- Nicole Wadsworth
- Lauren Walters
- Carissa Zozos



# FIRST HOLY COMMUNION

## *Apparel Boutique*

Call today to schedule your professional, no-obligation fitting and enjoy our selection of more than 100 dresses, including Mon Cheri, Nan & Jan, and more! Adriana Cupelli custom veils & tiaras available too. Shop dresses and suits early to guarantee size (5–18) and style.

**Appointment Hours:\***

**Monday–Friday, 9am–5pm, and Saturday, 9am–Noon.  
Sunday and evening appointments available.**

*\*Appointments are strongly encouraged  
in order to give each child the attention  
he or she deserves.*

### COMMUNION GIFTS & KEEPSAKES

We invite you to shop our wide,  
in-store selection of accessories,  
gifts and keepsakes:

- Music Boxes
- Photo Frames  
& Albums
- Communion Cards
- Money Holders
- Boxed Cross Sets
- Prayer Books  
& Cards
- Rosaries & Bibles
- Tabletop Statues
- Jewelry & Medals
- DVDs and More!







# **THANK YOU !**

We would like to extend our sincere gratitude to this evening's sponsors and donors whose commitment to Providence Heights Alpha School has made this evening possible.

## **EAGLE SPONSORS**



## **DINNER SPONSOR**



## **BAR & BEVERAGE SPONSOR**



## **PROVIDENT SPONSOR**

Wilson Group

## **BLUE & WHITE SPONSORS**

The Sisters of Divine Providence  
Alschuler Family  
Duncan Financial

## **TRANSPORTATION SPONSOR**

The Dog Stop

## **AUCTION SPONSOR**

Bath Fitter & Cabinet World  
Roma Italian Restauraunt and Pizzeria



TRADITION.  
INNOVATION.  
EXCELLENCE.



Don's Appliances contributes with sponsorships to local organizations year-round.

Our efforts support the people who live and breathe Pittsburgh.

*Today, we are proud to sponsor Providence Heights Alpha School's Alpha Gala.*

# **Don's Appliances**

*Exceptional Brands and Service Since 1971*

[www.donsappliances.com](http://www.donsappliances.com)



# SILENT AUCTION INFORMATION

## Mobile Bidding provided by GiveSmart

The Silent Auction and Giving Tree will be facilitated by GiveSmart, a mobile bidding platform.

**REGISTER:** To place a bid or make a donation, register your cell phone at <https://ALPHAGala2022.givesmart.com> or by scanning the QR Code provided below. You do not have to be in attendance to participate. If you have trouble, feel free to reach out.



**BID VIA SMARTPHONE:** Click the BLUE link in the welcome text message that you receive after registering to view your personal bidding page. You can search by category at the top and bottom of the screen. Select any item to view its full description and place a bid. The GiveSmart system prepopulates the minimum bid, just enter a new amount and click BID.

**AUTO BID:** To have the GiveSmart system automatically bid for you, select AUTO. You can then enter the amount you wish to bid up to, then select BID. The system will bid incrementally up to the designated amount each time someone bids against you. If no one bids against you the minimum bid will remain.

**BID VIA TEXT:** To see the current bid on an item, reply to any message from GiveSmart with the item's 3-digit item number. The GiveSmart system will notify you of the current bid, as well as the minimum bid requirement. If you wish to place a bid on the item, reply with by typing the item number and the amount you would like to bid. No dollar sign (\$) is needed. *Example: I want to bid on item 103. Type "103 300" in response to your GiveSmart text and you will place a \$300 bid on item 103.*

**DONATE:** Simply click the donate button "\$" on your smartphone and enter the amount. You can also reply to any message from GiveSmart with the word "GIVE" and an amount. No dollar sign (\$) is needed. *Example: I want to donate \$500. Type "GIVE 500" in response to your GiveSmart text and you will donate \$500.*

*NOTE: All sales are final. Processing fees will apply.*



# KING ORTHODONTICS

Pittsburgh's Most Confident Smiles.

is proud to support

## Providence Heights Alpha School

[kingorthodontics.com](http://kingorthodontics.com)



## SILENT AUCTION

All bidding for silent auction items is to be done online through the GiveSmart platform. Please be sure that you are registered. You do not need to be present to win a silent auction item. Minimum bids will vary. Incremental bids will be in the amount of \$10. The silent auction will close precisely at **5pm**. Once closed you will receive a text or email with your checkout information. For more information on the bidding process please see details on page 15.



**300-344 EXCLUSIVELY ALPHA:** These items are exclusive experiences for students enrolled in Providence Heights Alpha School and their families

**900-1009 GIVING TREE/TEACHERS WISHES:** This is a wish list from our teachers and staff. When you select an item to “buy” you will be covering the cost for the school to purchase the item for that person on your behalf.

## LIVE AUCTION

Live Auction items are not eligible for online bidding. These items are only available to those attending the event. Bidders must be present (or have a proxy) to bid. To bid on the item, raise your hand. The auctioneer's determination regarding all Live Auction items is final.

*Please see the insert for the complete list of Live Auction items.*

A grayscale background image of a large, multi-story school building with a prominent central steeple. The building is surrounded by trees and a lawn. The text is overlaid on this image.

**Thank you  
to the faculty, staff  
and everyone who's part  
of the Alpha family  
for making our school  
such a special place.**

**-The Alschuler Family-**





## WINE WHEEL

**\$20/Bottle:** Choose one of our pre-wrapped bags from the rack or table. All bottles are no less than \$20 in value.

The 2022 Alpha Gala is for the benefit of Providence Heights Alpha School. Alpha School is a not-for-profit agency with 501(c)3 status. All purchases this evening are considered transactions between the purchaser and the donor. Alpha School makes no warranties, expressed or implied, nor shall Alpha School be liable for any injuries or other direct, indirect or consequential damages, which may be incurred.

Some items that were donated separately are grouped together in packages for the purpose of sale. Each individual item must be used in accordance with its own restrictions and expiration date.

Our goal is that all items available for the auction are printed in this program. Any item that was received after our print date will be supplied on an insert. If you have any questions or concerns regarding any of the items up for auction please see an attendant or a gala committee member.

*Registered Pennsylvania Small Games of Chance License Number: 22100*



**Massaro**  
CONSTRUCTION GROUP

# BUILDING ON WHAT WE BELIEVE IN

SINCE 1967

Massaro is a proud sponsor of the 2022 Alpha Gala

Thank you Providence Heights Alpha School  
for all that you do for our community!

[www.massarocg.com](http://www.massarocg.com)



**Duncan**  
FINANCIAL GROUP

# PLANNING FOR A **BRIGHT** FINANCIAL FUTURE

- ❖ Insurance
- ❖ Taxes
- ❖ Estate Planning
- ❖ Wealth Management
- ❖ Investing
- ❖ Retirement Planning

Visit **DuncanGRP.com** to get started!

Services offered through Registered Representatives of Cambridge Investment Securities, Inc., a Broker/Dealer Member of FINRA/SIPC. Investment advisory services offered through Investment Advisor Representatives of Cambridge Investment Research Advisors, Inc., a Registered Investment Advisor. Cambridge and Duncan Financial Group, LLC and its subsidiaries are separate entities. 202201



# AGiREPAIR

Repair. Protection. Buyback. Parts. Provisioning.

*Trusted by 10,000+ School Districts and Businesses  
Nationwide for Device Repair, Buyback, and Protection.*



*MacBook Repair*



*iPad Repair*



*Chromebook Repair*

AGiRepair is a recognized leader in the mobile device repair and wireless repair parts industry with a steadfast commitment to offering cutting edge repair solutions for Apple and Chromebook devices. With over two decades of experience, AGiRepair is backed by innovative and unparalleled technical capabilities and 100+ highly-trained technicians.



## **AGiProtect (Cases + Repairs)**

End the guessing game involved with budgeting funds for your device repairs with AGiProtect, the ultimate case + repairs program from AGiRepair!

- **One-Time Fixed Cost**
- **Unlimited Repairs**
- **Free Shipping**
- **Instant Claim Approval**
- **Flexible Terms**



## **Device Buyback**

Recoup the highest value for your used Apple, Chromebook, and Windows devices. AGiRepair will purchase your devices providing you with cash or credit for our other solutions!

- **Top Dollar Payout**
- **Free Shipping Labels and Boxes**
- **Data Privacy**
- **No Deductions for Missing Adapters**
- **ISO & R2 Certified**

Contact an AGiRepair Account Executive to learn how we can help you manage your device fleet!  
education@agirepair.com • 888-325-1170

**[www.agirepair.com](http://www.agirepair.com)**



**World Class  
Sports Camps at  
La Roche University**

**SUMMER SOCCER CAMPS**

- Now Taking Names For Our Annual Camp!
- Boys & Girls K -11th grades
- Space is Limited!

Contact Coach Miguel.Lozano@LaRoche.edu  
today for more information & a brochure

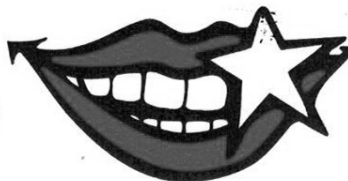
**2022 CAMP DATES**  
June 13-17, 20-24, July 11-15, 18-22, August 1-5

Multi-Week  
Discount  
Available for the  
Premier & Youth  
Community  
Soccer Camps

*Cheryl L. Rosato, D.M.D.*

5310 Perry Highway  
Pittsburgh, PA 15229

412-931-6571



*"We'd love to make your smile"*





LA ROCHE  
UNIVERSITY

# IN-PERSON CAMPUS VISITS

*Offered Daily!*

TO REGISTER: [laroche.edu/visit](https://laroche.edu/visit)

844-838-4578 | 412-536-1272

[admissions@laroche.edu](mailto:admissions@laroche.edu) | [laroche.edu](https://laroche.edu)

**VISIT LRU AND A \$250 GRANT WILL BE  
APPLIED TO YOUR FIRST SEMESTER TUITION!**





# *Kelly's*

---

## *Creative Concepts* INC.

*"The Beauty is in the Art... the Quality is in Our Service"*

Kitchen

&

Bathroom Remodeling

412.526.1261

[www.KellysCreativeConcepts.com](http://www.KellysCreativeConcepts.com)

# Z Florist

P i t t s b u r g h

804 Mt. Royal Blvd. Pittsburgh, PA 15223

412.486.1970

[zflorist.net](http://zflorist.net)

Studio hours:

Monday thru Friday - Open 10 to 7

Saturday - Open 10 to 5

Sunday - Closed

Phone 412.486.1970

Fax 412.486.2707

Thank you for your business!



*Allison Gannon* 

[allisongannon@howardhanna.com](mailto:allisongannon@howardhanna.com)

C (412) 596-1069

O (412) 741-2200



**LA ROCHE  
BASKETBALL**



Advanced Technology. Top Physicians.  
Excellent Care.

# It's all here.



At UPMC Passavant, patients have access to UPMC's renowned Magee, Hillman, and Heart and Vascular Institute physicians and care — without having to travel to the city. We are nationally recognized for the highest standards of care for nursing excellence, safety, and patient outcomes. And we're close to home. At UPMC Passavant, it's all here.

Find and schedule care at  
**[UPMCPassavant.com/ItsAllHere](http://UPMCPassavant.com/ItsAllHere)**.

# UPMC | PASSAVANT



# Denali Nicholas

Graphic Design · Social Media Marketing · Photography

denalianicholas@gmail.com



*James E. Kassner Consulting  
LLC.*

**PhD**

**MBA**

**Life**

**Offering close and confidential consulting based on  
over 50 years of successful executive experience in  
the chemicals and derived materials Industry.**

Cell and Text: 7242726864    [Kassner@consolidated.net](mailto:Kassner@consolidated.net)





**CENTRAL  
CATHOLIC**  
HIGH SCHOOL

*Men of Faith, Men of Scholarship, Men of Service*

**is proud to support  
Providence Heights Alpha  
School**

---

**centralcatholichs.com**

**4720 Fifth Avenue, Pittsburgh, PA 15213**

**412.208.3400**





## CATHY PASCARELLA PHOTOGRAPHY



High School Senior Photography  
Corporate Headshots  
Real Estate Photography



[www.cathypascarellaphotography.com](http://www.cathypascarellaphotography.com)

412-427-4901



**wickedskatewear.com**

## **Get the bathroom you've always wanted in as little as one day.**

We've been your hometown bath remodeling company for over 25 years. Our team lives, trains, and works in the Pittsburgh area. We're here to support and service you.

See why over **40,000** satisfied local customers choose Bath Fitter of Pittsburgh. Schedule your free in-home or virtual consultation today!

**BATH  
FITTER®**  
OF PITTSBURGH

**Experience the Bath Fitter Advantage.**

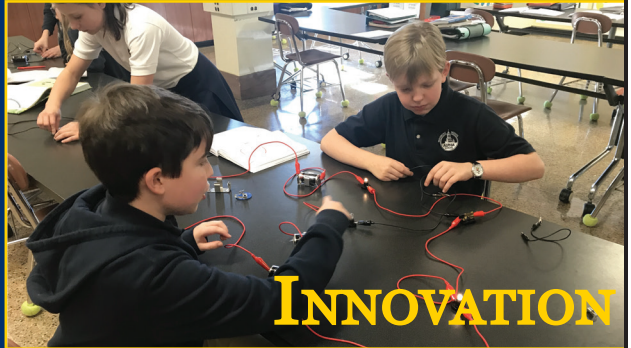
BATHFITTERPITTSBURGH.COM 800-645-63317

STREETS OF CRANBERRY 20430 US 19, SUITE 140  
CRANBERRY TOWNSHIP, PA 16066 PA 641





# TRADITION



# INNOVATION



# EXCELLENCE

Providence Heights Alpha School wishes to thank everyone for making the 2021- 2022 Alpha Gala a success. The generosity of our sponsors, donors, and attendees will enable Alpha School to continue our mission of developing servant leaders and innovative thinkers by providing a distinguished Catholic education.

*Founded and sponsored by the Sisters of Divine Providence*



Making the world a better place  
starts right here  
at home.



UPMC is proud to support Providence  
Heights Alpha School.

**UPMC**  
LIFE CHANGING MEDICINE